



The background image shows a person in a business suit pointing at a large digital screen. The screen displays several data visualizations: a world map made of dots, a bar chart with five bars labeled 65EG, 9R8M, H87K, Q8JA, and Z03W, two donut charts showing 90% and 45%, a small line graph with an upward arrow, and a large line graph at the bottom. The overall theme is business and technology.

# *Cornerstone*

information systems®

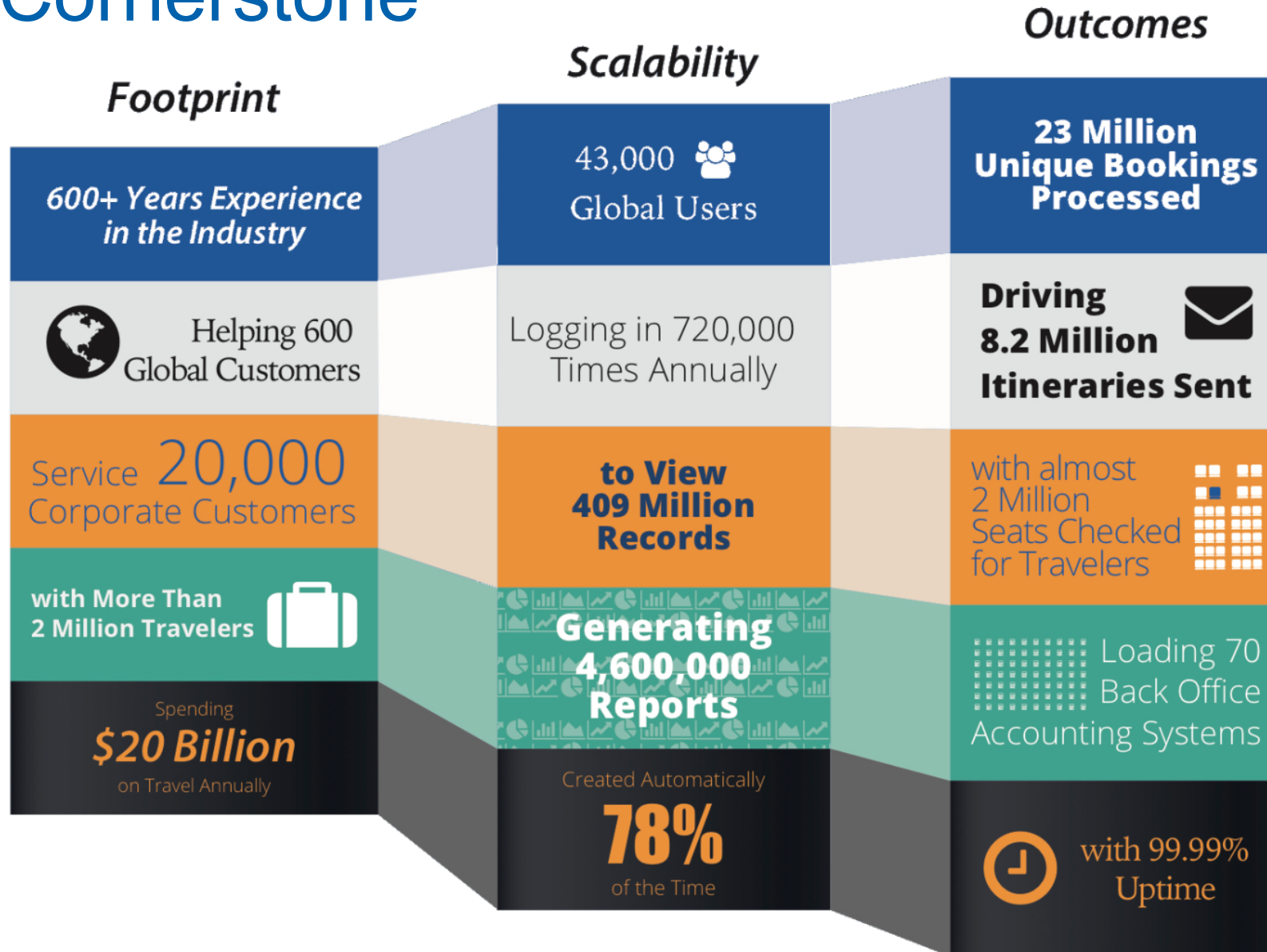


A low-angle, upward-looking shot of several modern skyscrapers with glass facades, reaching towards a clear blue sky. The perspective creates a sense of height and architectural grandeur.

# We are a global travel technology and data services provider with unique domain knowledge in the travel industry

With a foundation in automation, we design, build, and deliver technology for travel companies and corporate buyers. We help our partners manage their process and information, to drive better decision making.

# About Cornerstone



# Cornerstone's first data automation solutions launched over twenty years ago, and we have continued to innovate solutions to meet the evolving needs our customers.

**1990s**

First Windows-based QC system and introduced the first fully web-based, real-time data consolidation and reporting solutions

**2004**

Released open architecture to acquire different types of travel data

**2007**

Launched intuitive analytics engine to transform data in actionable insights

**2015**

Introduced data visualization platform to let customers tell each story

**2001**

Launched data management and fare processing solutions

**2005**

Introduced first fully hosted reservation management, document delivery and reporting solution

**2010**

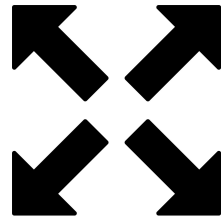
Launched ability for customers to create their own applications for their unique needs

**2016**

Launching new solutions to drive virtual payments and manage the traveler's journey



# A single integrated technology platform



Our industry experience is deep and wide, engaging with leisure travel agencies, travel management companies, corporations, consolidators, governments, and third-party providers



Our flexible technology platform is designed to integrate with any GDS, consolidate data from a variety of sources, and provide advanced visualizations for your data

# Our platforms are driven by outcomes



Reservation Management



Quality reporting for business decisions starts by monitoring the data at the moment it is created

**4site**



Automated Processing



Business rules automation looks for errors and fixes those errors in near real time, optimizing workflows and reducing manual touches

**iQCX**



Information Management



Data is acquired, cleansed, normalized, and warehoused in order to feed reporting and visualization

**iBank**



Data Visualization



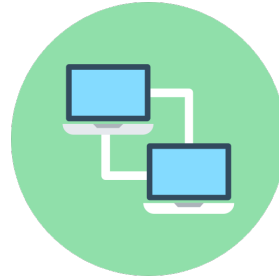
Combine reservation data with other data sources to create data visualization that drive insight and decision-making for your business

**TravelOptix**

# Technical Information



Cloud-Based  
Platform



Hot-Warm Disaster  
Recovery Protocol



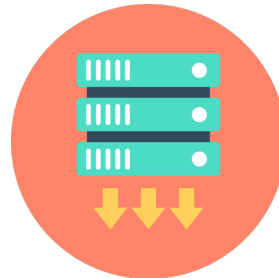
PCI  
Compliant



Privacy Shield  
Compliant



Annual Security  
Audits



Data  
Exports



Profile Based  
Access



Single  
Sign-On

For more information, contact Michael Kell or visit us at CISwired.com.

Michael Kell, GLP, CCTE, CTE, CHRM  
Director, Business Development  
mkell@ciswired.com  
O +1 (812) 650-7131  
M +1 (312) 590-0711

